

MMCall

User Manual



Staff/Server Paging System

T10 Transmitter & NC8/NS8 Pagers

(855) 638-2034 | www.MMCallUS.com

Table of Contents

Setup and Use	3
Charger	3
Host.....	4
Call a Pager	5
Send Preset and Custom Messages	5
Call All Pagers	6
Transmitter Settings	6
Change Transmitter Time	7
Assigning Default and Preset Messages	7
Turn ON/OFF the Beepers/Watches.....	8
Delete Messages	8
Charge Beepers/Watches	8
Change Beeper/Watch Time	9
Change Display Timeout.....	10
Change Vibration Length	11
Troubleshooting.....	12
If Pager does not Receive Pages	12
Check the Power Supply	12
Charging Check	13

Service Questions and Answers	13
What to do if the system malfunctions?.....	13
System Repair after Warranty Expiration	13
Ordering Additional Pagers	13
Product Specifications.....	13
Warranty	14
FCC Interference Statement.....	14

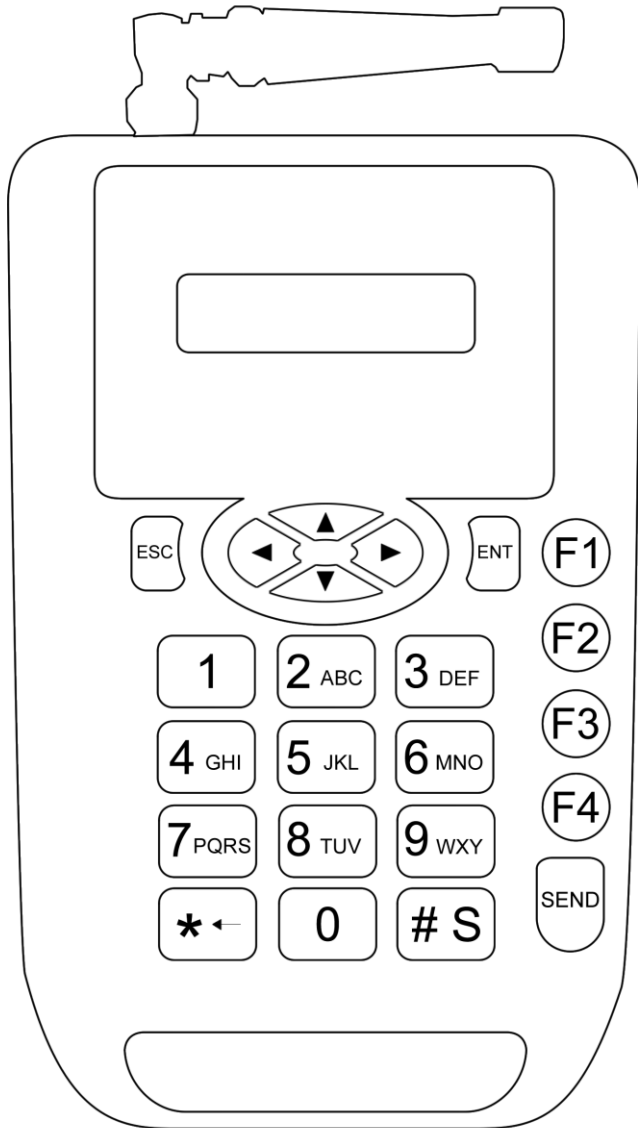
Setup and Use

- Plug power cord into outlet, then plug other end into transmitter.
- Attach antennae by fitting and twisting to the right.
- To turn on pagers, hold the RIGHT arrow for 5 seconds.
- The Pager display will show the number (01, 02, etc.) in the bottom right corner.
- To wake up the pager from display sleep, hold the RIGHT arrow for 1 second.

Pager Charger

Plug cable into charging dock for watches, and directly into beepers (see page 8-9).

How to use the Transmitter?



F1: Home Screen

F4: Settings

SEND: Call Pager

***← :** Delete

S : Numeric / Capitalize

/ Loser Case

Call a Pager

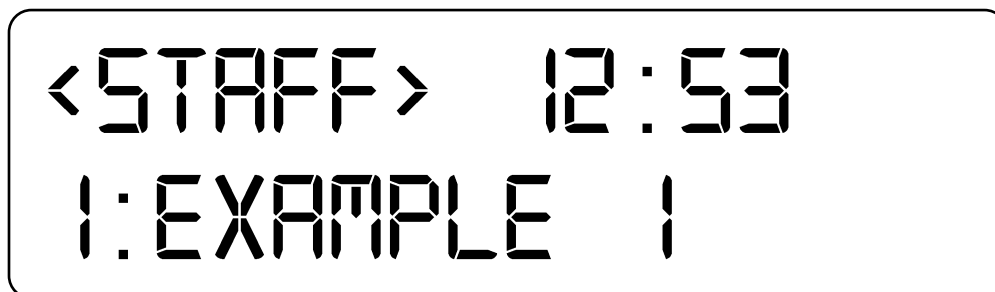
When calling a staff member, enter the pager number. To send the Default message (see settings page 7) simply press SEND:



You will know the signal was sent when the image next to the time appears, and the number is highlighted by the cursor.

Calling the Pager with Preset Messages

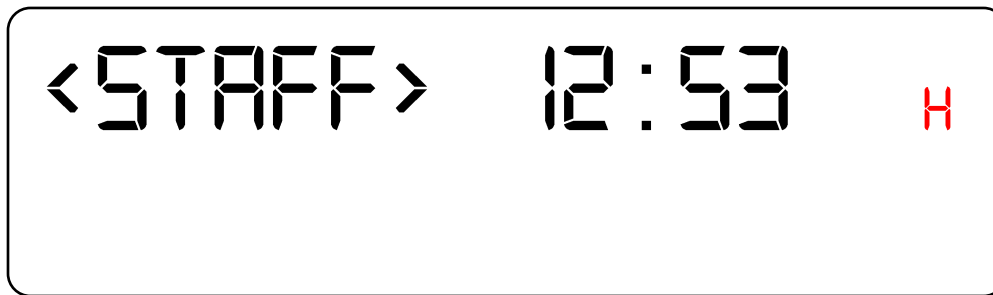
When sending customized preset messages (see settings page 7), press ENT after inputting the pager number, but before pressing SEND. Scroll up or down with arrows to view these messages. Press SEND to send just this message.



Adding Custom Messages

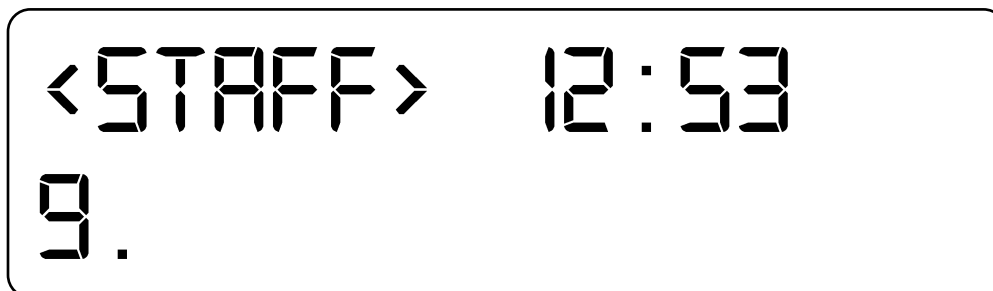
When sending custom messages, or adding to the preset messages, press ENT after inputting the pager number. To add to the preset message (i.e. Instead of "Example 1" to read "Example 1 ASAP") have Example 1 chosen, then press ENT again instead of SEND. Use the #

key to shift between numeric and upper/lower case letters.



Press "2" twice for "B", etc. and "0" for space.

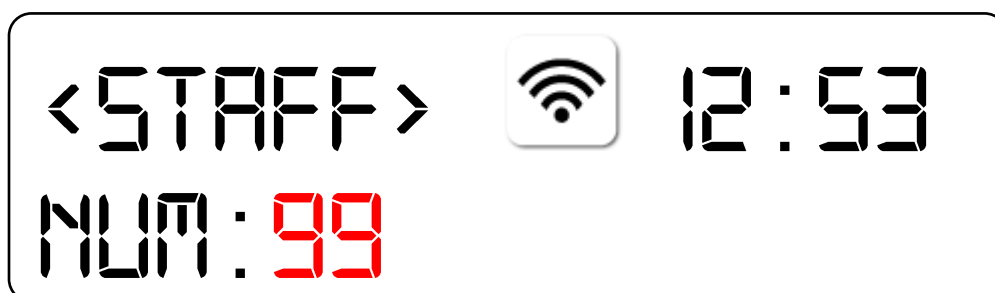
To send a completely new message, choose a blank entry in the preset messages, and press ENT, then input the message.



Press SEND to send the custom message.

Call All Pagers

1. When calling all staff/server, enter 99 and press SEND:



Transmitter Settings

Press F4 in the bottom right corner. Enter 1234 as the password, and then press ENT.



<SETUP> 12:53
PASS: 1234

Change Time:

1. Use numbers on transmitter to change time, press UP or Down to adjust AM/PM or 25 hour mode. Press ESC when done.
2. Press F1 to exit settings menu.



<CHANGE TIME>
TIME: 12:34PM

Default and Preset Messages

Menu #5: Preset Message (Default): Initial message sent without additional messages (often preset as “Please Return to Counter”).

- a. Use the “#S” Key to choose between numeric or alphabet characters, then type out message. Press “2” twice to get “B”, etc. and “0” for a space.

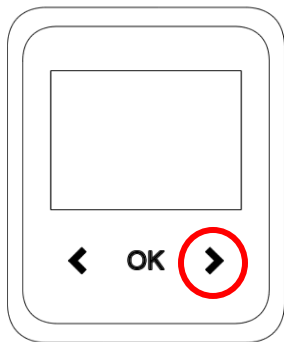
Menu #6: Message (preset): Additional messages to choose from.

- a. Message 1: Press ENT and input message. Press ENT when done, then ESC to leave that menu. Scroll up or down to change Message 2-9.
- b. Note: to send completely custom messages later (i.e. without preset words) one of these 9 messages must remain blank.

How to use the Beepers/Watches?

Turn ON/OFF the Beepers/Watches

To turn ON/OFF beepers/watches, hold the RIGHT arrow for 5-10 seconds. If by any chance the pager does not turn on, plug it in to the charger.



To wake the pager up from display sleep, hold the RIGHT arrow for 1 second.

Delete Messages

To delete messages from the pager, press the LEFT arrow. Press OK to see a full list of all pending messages.



Charge Pagers

To charge the watch, place on the charging square with the pins going into the connectors on the bottom of the watch. Pager should say "Charging..."

To charge the beepers, lift the rubber on the side and connect the micro USB.

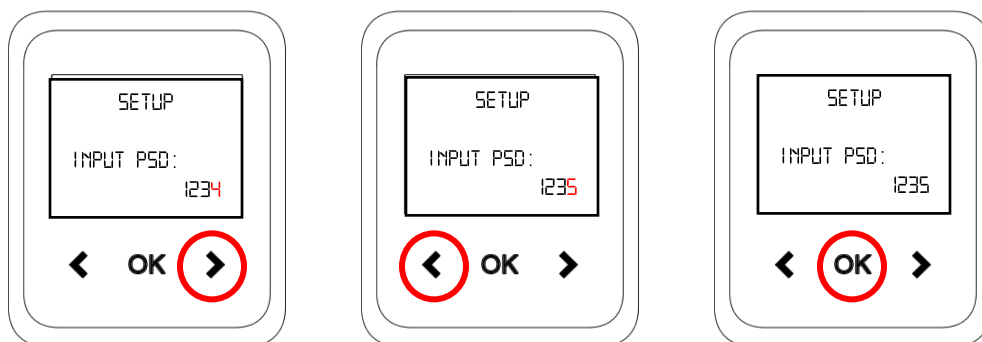
Pager should say "Charging..."

Pager Settings

To access settings, hold LEFT arrow until password appears.

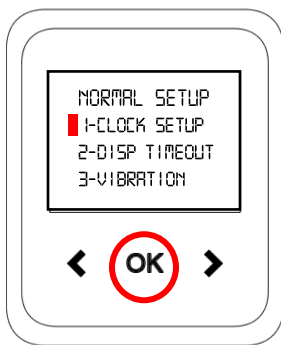


(Next step must be done quickly) To enter the password, use RIGHT arrow to move cursor to last number (4) and use LEFT arrow to change to 5. Password should read 1235. Press OK.



Change Pager Time

1. See "1-Clock Setup" as the first menu item. Press OK when option is highlighted.



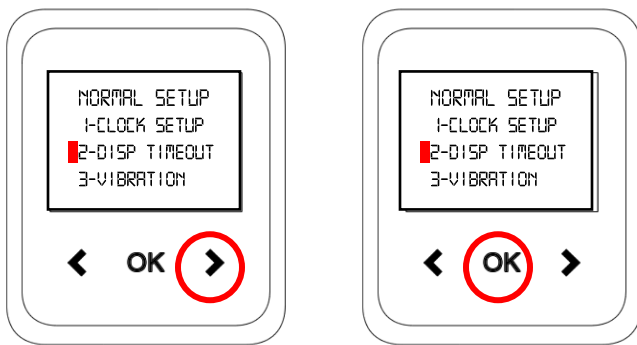
2. Use RIGHT arrow to move cursor through number, and LEFT arrow to change numbers. 24 hour mode only (Hour:Minute:Second). Press OK when done to return to main menu.



3. To leave the menu at any time, hold the LEFT arrow until you return to the main screen.

Change Display Timeout

1. This will change how long the display stays on before going dark (but not turning off the pager completely).
2. Use the RIGHT arrow to scroll through menu to “2-Disp Timeout”. Press OK when option is highlighted.



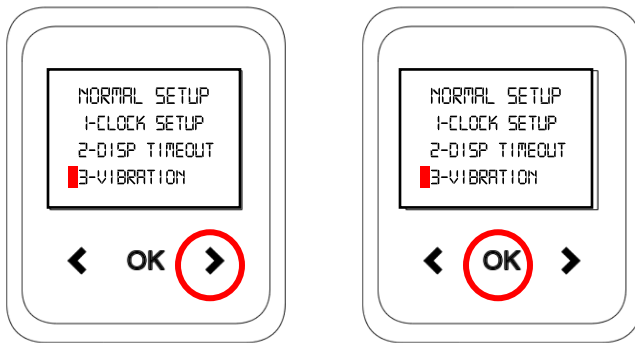
3. Use RIGHT arrow to move cursor through number, and LEFT arrow to change display timeout. Press OK when done to return to main menu.



4. To leave the menu at any time, hold the LEFT arrow until you return to the main screen.

Change Vibration Length

1. This will change how long the pager will vibrate for after receiving the message.
2. Use the RIGHT arrow to scroll through menu to “3-Vibration”. Press OK when option is highlighted.



3. Use RIGHT arrow to move cursor through number, and LEFT arrow to change vibration length. Press OK when done to return to main menu.



4. To leave the menu, hold the LEFT arrow until you return to the main screen.

Troubleshooting

If Pager does not Receive Pages

1. Be sure that the pagers are charged and turned on.
2. Be sure transmitter power is plugged in and display is lit.
 - If display is blank, check power supply as described below.
 - If display is lit, check transmitter functions described below.

Check the Power Supply

1. Be sure the wall outlet that the power supply is plugged into is working (plug another device into it and see that it works properly).
2. Be sure the wire that plugs into the side of the transmitter is plugged in securely.
 - If the transmitter powers up from a known good power supply, but not from the charger power supply, you probably have a bad charger power supply. Call MMCall for a replacement or repair.

Charging Check

Please take note of the following charging requirements and functions.

1. Watches should be placed on charging squares with pins facing into metal connectors on back of watch.
2. Micro USB should be plugged in with USB plugged in to power supply.
3. Watches charge best with longer strap on table beneath charging square, with watch face facing up.

Service Questions and Answers

What to do if the system malfunctions?

Should your paging system ever fail to function properly, refer to the previous troubleshooting section. If you've followed all the steps and requirements and your system is still inoperable, you may call MMCall at (855) 638-2034 Monday through Friday 9:00 am to 5:00 pm Eastern Time.

System Repair after Warranty Expiration

Call MMCall before sending a non-warranty item in for repair.

Ordering Additional Pagers

Call MMCall at (855) 638-2034 to place your order.

Product Specifications

Required Voltage: 110-220V outlet for pager chargers, MMCall issued 12VAC, 4A power supply included in kit.

Battery Life: Approximately 3-5 years

Battery Charge Life: Approximately 1-4 days (depends on how often they are paged).

Recharge time: 2-4 hours minimum from completely discharged.

Operating Range: Up to 3/4 mile

Dimensions: 9" x 5" x 1.5"

Warranty

MMCall warrants this product against any defects that are due to faulty material or workmanship for a one-year period after the original date of consumer purchase of the complete paging system (transmitter, pagers, and charger). This warranty does not include damage to the product resulting from accident, misuse or improper electrical connection. If this product should become defective within the warranty period, we will repair or replace with equivalent product, free of charge.

No return or replacement can be received without prior authorization.

This warranty gives you specific legal rights and you may also have rights that vary from state to state.

FCC Interference Statement

This equipment has been tested and found to comply with the limits for a Class B digital device, pursuant to part 15 of the FCC Rules. These limits are designed to provide reasonable protection against harmful interference in a residential installation. This equipment generates, uses and can radiate radio frequency energy and, if not installed and used in accordance with the instructions, may cause harmful interference to radio communications.

However, there is no guarantee that interference will not occur in a particular installation. If this equipment does cause harmful interference to radio or television reception, which can be determined by turning the equipment off and on, the user is encouraged to try to correct the interference by one or more of the following measures:

- Reorient or relocate the receiving antenna.
- Increase the separation between the equipment and receiver.
- Connect the equipment into an outlet on a circuit different from that to which the receiver is connected.
- Consult the dealer or an experienced radio/TV technician for help.

CAUTION:

Any changes or modifications not expressly approved by the grantee of this device could void the user's authority to operate the equipment.



(855) 638-2034

1444 Biscayne Blvd,

Miami, FL 33132

www.MMCallUS.com