



**Mount
Sinai**

EMERGENCY & CRITICAL CARE ULTRASOUND Course

March 15, 2013

Schedule

7:45am: Registration

8:00-8:45am

Physics and Instrumentation
Bret Nelson, MD, RDMS

8:45-9:30am

Airway and Breathing
Jim Tsung, MD, MPH

9:30-9:45am: Break

9:45-10:30am

Circulation
Jennifer Huang, DO

10:30-11:30am

Disability (Trauma Ultrasound)
Phil Andrus, MD

11:30- 12:15pm

Ultrasound for Procedures
Daniel Lakoff, MD

12:15-1:00pm

Lunch (provided)

1:00-5:00pm

Hands-on Session
All Faculty

Sponsored by the Department of Emergency Medicine, Icahn School of Medicine at Mount Sinai

Visit **www.SinaiEM.us** for further details

Program Goal

As a result of this course, participants should feel comfortable with the use of bedside ultrasound for diagnosis of emergent pathology and in guidance of bedside procedures

Educational Objectives

At the conclusion of this CME activity, the participant should be able to:

1. Discuss the practical clinical use of ultrasound in patient care
2. Identify normal anatomy as well as pathology such as pericardial effusion, hemoperitoneum, and pneumothorax
3. Guide bedside procedures such as IV access and others



Course Director:
Bret P. Nelson, MD, RDMS
bret.nelson@mssm.edu

Email: cme@mssm.edu
Phone: 212.731.7950

Register Online: www.mssm.edu/cme/courses/2013ultrasound

Target Audience

Emergency and Critical Care physicians and PAs

Renowned Faculty

Our faculty have lectured nationally and internationally and have extensive experience in teaching ultrasound to physicians of all levels

“Superior presentation. Speakers were excellent.”

Live models and hands-on sessions

Didactic sessions are reinforced with ample time for scanning on live models, questions and answers, and practicing procedural techniques on simulators

“Hands-on training greatly improved my confidence and abilities.”

“Highly recommended”



ACCREDITATION

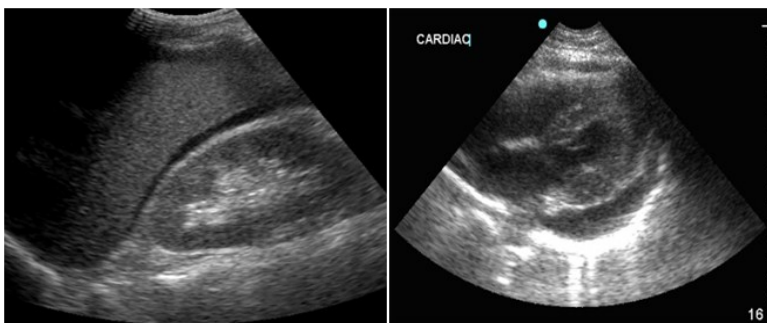
The Icahn School of Medicine at Mount Sinai is accredited by the Accreditation Council for Continuing Medical Education to provide continuing medical education for physicians.

CREDIT DESIGNATION

The Icahn School of Medicine at Mount Sinai designates this live activity for a maximum of 8.0 AMA PRA Category 1 Credits™. Physicians should only claim only the credit commensurate with the extent of their participation in the activity.

SPECIAL NEEDS

Icahn School of Medicine at Mount Sinai fully complies with the legal requirements of the Americans with Disabilities Act and the rules and regulations thereof. Participants with special needs please call 212.731.7950.



Course Director

Bret P. Nelson, MD, RDMS, FACEP

Associate Professor of Emergency Medicine
Director of Emergency Ultrasound
Mount Sinai Hospital, New York

Distinguished Faculty

Phil Andrus, MD

Assistant Professor of Emergency Medicine
Associate Director of Emergency Ultrasound
Mount Sinai Hospital, New York

Danny Duque, MD, RDMS

Assistant Professor of Emergency Medicine
Director of Emergency Ultrasound
Elmhurst Hospital Center, New York

Jennifer Huang MD, RDMS

Department of Emergency Medicine
Mount Sinai Hospital, New York

Daniel Lakoff, MD

Department of Emergency Medicine
Mount Sinai Hospital, New York

Jim Tsung, MD, MPH

Assistant Professor of Emergency Medicine
Director of Pediatric Emergency Ultrasound
Mount Sinai Hospital, New York

Registration fee of \$450 includes:

- ✓ 8 AMA PRA Category 1 Credits™.
- ✓ Manual of Emergency and Critical Care Ultrasound, 2nd Ed

Register online:

www.mssm.edu/cme/courses/2013ultrasound

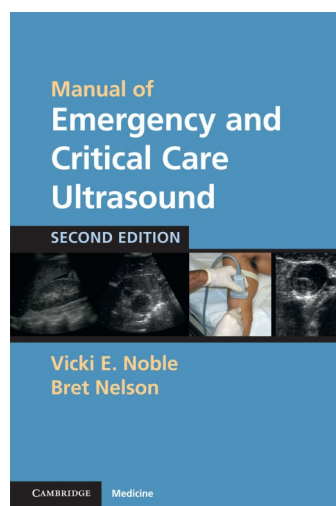
Additional information:

Email: cme@mssm.edu

Phone: 212.731.7950

Cancellation Policy

Cancellations must be confirmed in writing to the Office of CME by March 8, 2013 for refund. No refunds will be made on cancellations after this date or for “no shows.”



It is the policy of Icahn School of Medicine at Mount Sinai to ensure objectivity, balance, independence, transparency, and scientific rigor in all CME-sponsored educational activities. All faculty participating in the planning or implementation of a sponsored activity are expected to disclose to the audience any relevant financial relationships and to assist in resolving any conflict of interest that may arise from the relationship. Presenters must also make a meaningful disclosure to the audience of their discussions of unlabeled or unapproved drugs or devices. This information will be available as part of the course material.