



**Mount
Sinai**

Pediatric Bedside ULTRASOUND Course April 19, 2015

Schedule

7:45am Registration

8:00-8:45am

Physics, instrumentation
Bret Nelson, MD, RDMS

8:45-9:30am

Abdominal Ultrasound
Ee Tay, MD

9:30-9:45am

Break

9:45-10:30am

Thoracic Ultrasound
James Tsung, MD, MPH

10:30-11:30am

MSK and Soft Tissue
Jennifer Sanders, MD

11:30- 12:25pm

Ultrasound for Procedures
Joshua Guttman, MD, FRCPC

12:15-1pm

Lunch (provided)

1-5pm

Hands-on Session
Faculty

Sponsored by the Department of Emergency Medicine, Mount Sinai School of Medicine

Visit www.SinaiEM.us for further details

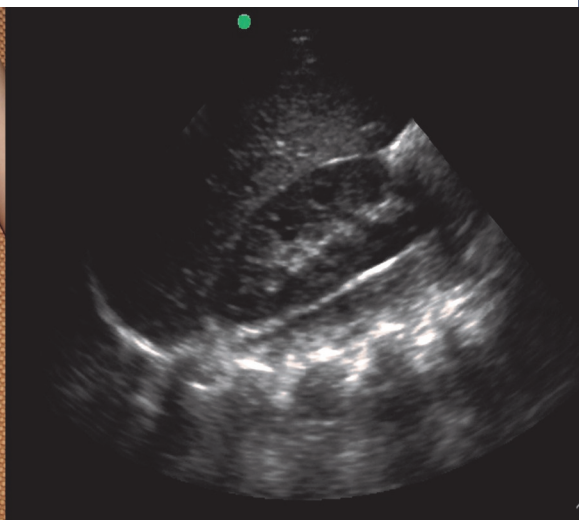
Program Goal

As a result of this course, participants should feel comfortable with the use of bedside ultrasound for diagnosis of emergent pathology and in guidance of bedside procedures

Educational Objectives

At the conclusion of this CME activity, the participant should be able to:

1. Discuss the practical clinical use of ultrasound in patient care
2. Identify normal sonographic anatomy as well as pathology identified on bedside ultrasound
3. Guide bedside procedures such as IV access and others
4. Identify scenarios where ultrasound may improve patient care



Course Director:

Ee Tay, MD

ee.tay@mountsinai.org

To register, contact:

www.mssm.edu/cme/courses/ultrasound

Email: cme@mssm.edu

Phone: 212-731-7950

Target Audience

Clinicians providing acute care to pediatric patients

Renowned Faculty

Our faculty have lectured nationally and internationally and have extensive experience in teaching ultrasound to physicians of all levels

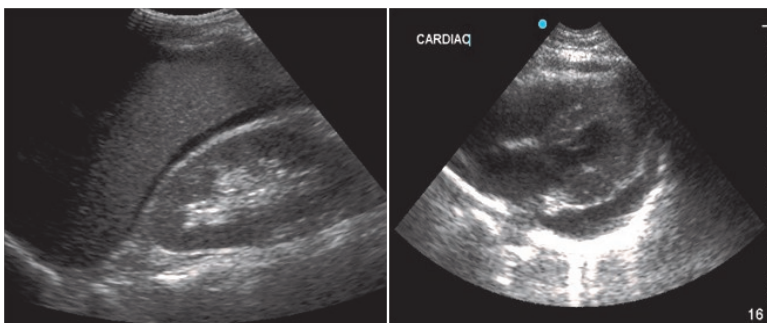
“Superior presentation. Speakers were excellent.”

Live models and hands-on sessions

Didactic sessions are reinforced with ample time for scanning on live models, questions and answers, and practicing procedural techniques on simulators

“Hands-on training greatly improved my confidence and abilities.”

This activity has been approved for 8 AMA PRA Category 1 Credits



Course Director

Ee Tay, MD

Assistant Professor of Emergency Medicine
Associate Director of Pediatric Emergency
Ultrasound
Mount Sinai Hospital, New York, NY

Distinguished Faculty

Bret Nelson, MD, RDMS, FACEP

Associate Professor of Emergency Medicine
Director of Emergency Ultrasound
Mount Sinai Hospital, New York, NY

James Tsung, MD, MPH

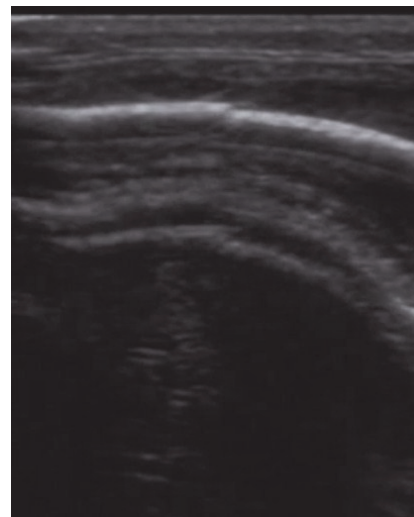
Assistant Professor of Emergency Medicine
Director of Pediatric Emergency Ultrasound
Mount Sinai Hospital, New York

Joshua Guttman, MD, FRCPC

Clinical Instructor of Emergency Medicine
Mount Sinai Hospital, New York, NY

Jennifer Sanders, MD

Senior Pediatric Emergency Medicine Fellow
Mount Sinai Hospital, New York, NY



ACCREDITATION

The Mount Sinai School of Medicine is accredited by the Accreditation Council for Continuing Medical Education to provide continuing medical education for physicians.

CREDIT DESIGNATION

The Mount Sinai School of Medicine designates this live activity for a maximum of 8.0 AMA PRA Category 1 Credits™. Physicians should only claim credit commensurate with the extent of their participation in the activity.

SPECIAL NEEDS

Mount Sinai School of Medicine fully complies with the legal requirements of the Americans with Disabilities Act and the rules and regulations thereof. Participants with special needs are requested to contact the Page and William Black Post-Graduate School at 212.731.7950.

Registration fee of \$475 includes:

- ✓ 8 hours of CME credit
- ✓ Continental breakfast and lunch provided

Register online at:

www.mssm.edu/cme/courses/ultrasound

For additional information:

Email: cme@mssm.edu

Phone 212-731-7950

Cancellation Policy

Cancellations must be confirmed in writing to the course director by April 1, 2015 for refund. No refunds will be made on cancellations after this date or for “no shows.”

It is the policy of Mount Sinai School of Medicine to ensure objectivity, balance, independence, transparency, and scientific rigor in all CME-sponsored educational activities. All faculty participating in the planning or implementation of a sponsored activity are expected to disclose to the audience any relevant financial relationships and to assist in resolving any conflict of interest that may arise from the relationship. Presenters must also make a meaningful disclosure to the audience of their discussions of unlabeled or unapproved drugs or devices. This information will be available as part of the course material.