



MOUNT SINAI
SCHOOL OF
MEDICINE

EMERGENCY & CRITICAL CARE

ULTRASOUND

Course

March 7, 2011

Schedule

8:00-8:45am

Physics, instrumentation
Robert Arntfield, MD

8:45-9:30am

Airway and Breathing
Jim Tsung, MD, MPH

9:30-9:45am

Break

9:45-10:30am

Disability
Phil Andrus, MD

10:30-11:30am

Circulation
Scott Weingart, MD, RDMS

11:30- 12:25pm

Ultrasound for Procedures
Danny Duque, MD, RDMS

12:15-1pm

Lunch (provided)

1-5pm

Hands-on Session
Faculty

Sponsored by the Department of Emergency Medicine, Mount Sinai School of Medicine

Visit www.SinaiEM.us for further details

Program Goal

As a result of this course, participants should feel comfortable with the use of bedside ultrasound for diagnosis of emergent pathology and in guidance of bedside procedures

Educational Objectives

At the conclusion of this CME activity, the participant should be able to:

1. Discuss the practical clinical use of ultrasound in patient care
2. Identify normal anatomy as well as pathology such as pericardial effusion, hemoperitoneum, and pneumothorax
3. Guide bedside procedures such as IV access and others

Course Director:
Bret P. Nelson, MD, RDMS
bret.nelson@mssm.edu

To register, contact:
www.mssm.edu/cme/courses/ultrasound

Email: cme@mssm.edu
Phone: 212-731-7950



Target Audience

Emergency and Critical Care physicians and PAs

Renowned Faculty

Our faculty have lectured nationally and internationally and have extensive experience in teaching ultrasound to physicians of all levels

“Superior presentation. Speakers were excellent.”

Live models and hands-on sessions

Didactic sessions are reinforced with ample time for scanning on live models, questions and answers, and practicing procedural techniques on simulators

“Hands-on training greatly improved my confidence and abilities.”

This activity has been approved for 8 AMA PRA Category 1 Credits



ACCREDITATION

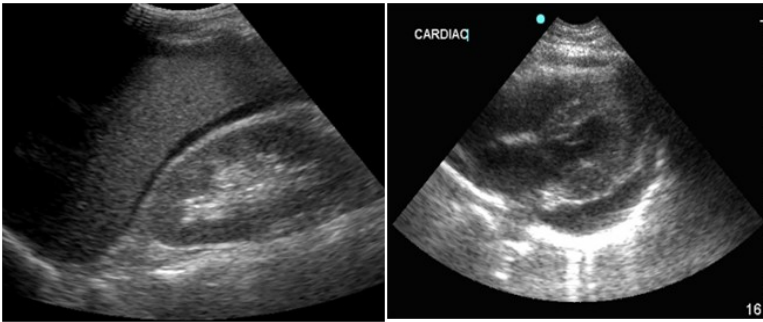
The Mount Sinai School of Medicine is accredited by the Accreditation Council for Continuing Medical Education to provide continuing medical education for physicians.

CREDIT DESIGNATION

The Mount Sinai School of Medicine designates this live activity for a maximum of 8.0 AMA PRA Category 1 Credits™. Physicians should only claim credit commensurate with the extent of their participation in the activity.

SPECIAL NEEDS

Mount Sinai School of Medicine fully complies with the legal requirements of the Americans with Disabilities Act



Course Director

Bret P. Nelson, MD, RDMS, FACEP

Associate Professor of Emergency Medicine
Director of Emergency Ultrasound
Mount Sinai Hospital, New York

Distinguished Faculty

Phil Andrus, MD

Assistant Professor of Emergency Medicine
Associate Director of Emergency Ultrasound
Mount Sinai Hospital, New York

Robert Arntfield, MD

Assistant Professor of Emergency Medicine
Mount Sinai Hospital, New York

Danny Duque, MD, RDMS

Assistant Professor of Emergency Medicine
Director of Emergency Ultrasound
Elmhurst Hospital Center, New York

Jim Tsung, MD, MPH

Assistant Professor of Emergency Medicine
Director of Pediatric Emergency Ultrasound
Mount Sinai Hospital, New York

Scott Weingart, MD, RDMS

Assistant Professor of Emergency Medicine
Director of Emergency Critical Care
Elmhurst Hospital Center, New York

Registration fee of \$450 includes:

- ✓ 8 hours of CME credit
- ✓ Manual of Emergency and Critical Care Ultrasound

Register online at:

www.mssm.edu/cme/courses/ultrasound

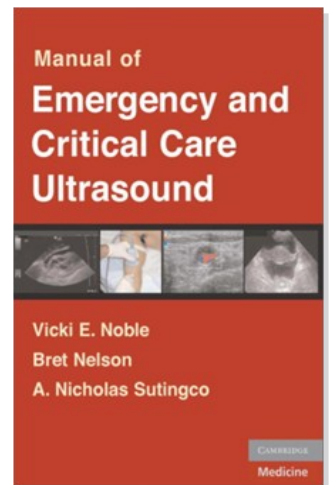
For additional information:

Email: cme@mssm.edu

Phone 212-731-7950

Cancellation Policy

Cancellations must be confirmed in writing to the course director by March 1, 2011 for refund. No refunds will be made on cancellations after this date or for “no shows.”



It is the policy of Mount Sinai School of Medicine to ensure objectivity, balance, independence, transparency, and scientific rigor in all CME-sponsored educational activities. All faculty participating in the planning or implementation of a sponsored activity are expected to disclose to the audience any relevant financial relationships and to assist in resolving any conflict of interest that may arise from the relationship. Presenters must also make a meaningful disclosure to the audience of their discussions of unlabeled or unapproved drugs or devices. This information will be available as part of the course material.